



## ***Vertical Socket Level Tester***

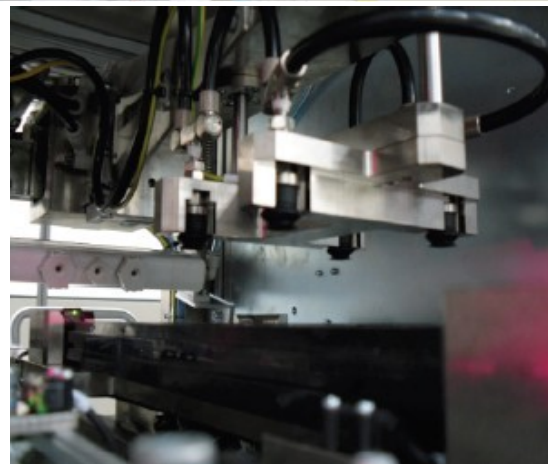
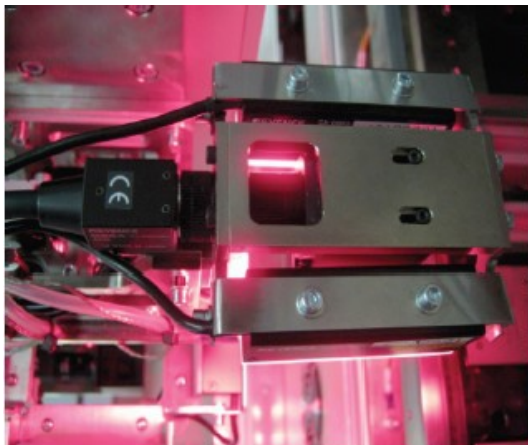
The **VSLT** system is designed for high-speed placement of CPU and GPU processors on board level for functional testing and quality analysis. The **VSLT** system applies the latest technology available in the market for high speed and accurate IC placement, the key factors are: Precision Placement, Vision Technique, High Contact Pressure and Dual Tip Loading / Unloading End Effectors.

On the fly bottom BGA vision processing while the head travels between pickup point and DUT unloading point at optimal placement speeds. Accurate contact pressure control through Electro-Pneumatic Regulator.



### **FEATURES:**

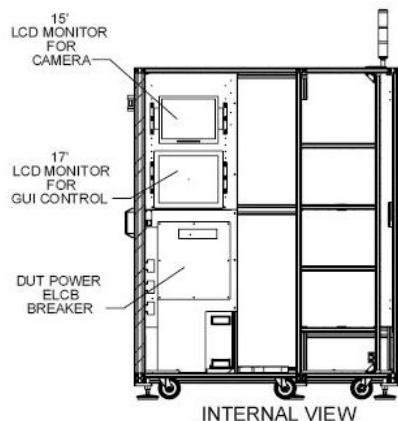
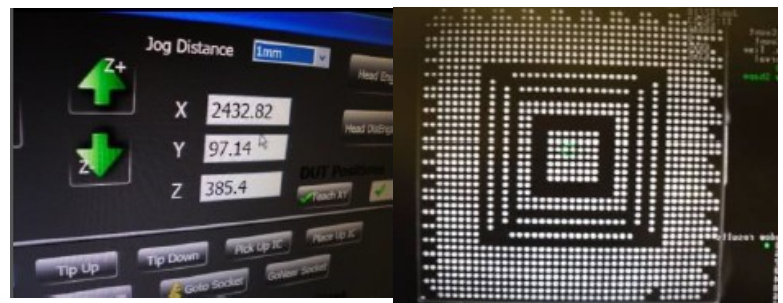
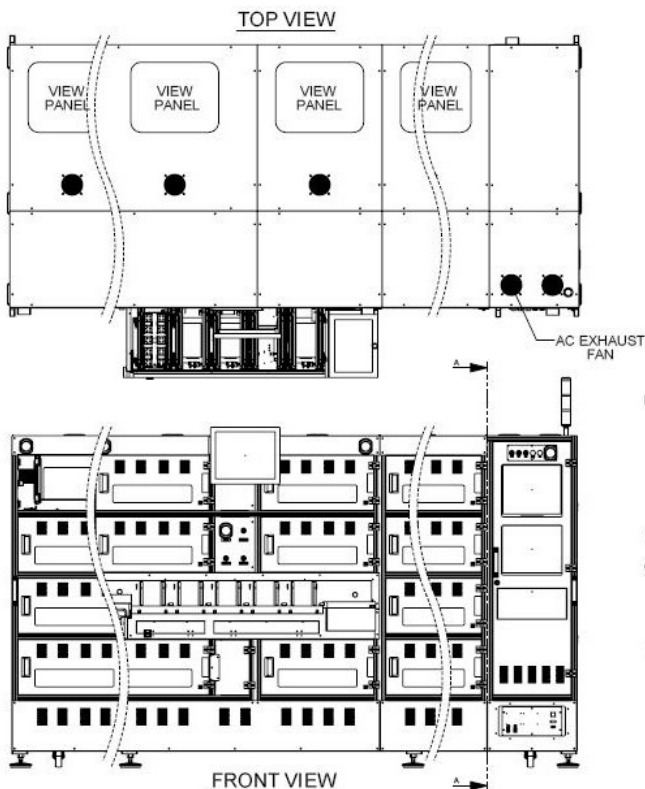
- Applicable to fine pitch BGA & PGA
- Optional ball and pin condition check
- Different thickness JEDEC tray feeders
- High speed Servo Motors for all axis providing greater reliability
- LED light illumination for high contrast image processing
- High MTBA for optimum performance and high throughput
- EP Regulator for accurate contact force
- Ambient to 90° C testing temperature





## VSLT Specifications

Structure Size (L x W x H)	5.0 M x 1.90 M x 1.9 M
Board Dimensions	400 mm x 400 mm maximum
Machine Configuration	Standard: 22 cells DUT Station, configurable (18~30 cells)
Binning Configuration (tray)	2 Auto-Unloader + 3 Manual / 3 Auto-Unloader + 3 Manual
Loader Conveyor Configuration	1 Auto-Loader / 2 Auto-Loader
Indexing Speed (sec)	Less than 2 secs
Device Package Capability	15 mm x 15 ~ 60 mm x 60 mm
X / Y Axis Servo Motor	Maintenance free AC brushless Servo Motor
Contact pressure / DUT	30kgf ~ 70kgf / DUT (EP Regulator option)
Throughput	330 UPH (Zero Test time, 6 x 4 configuration)
Jam Rate	1 / 2000 pcs.
Top Vision Camera	Orientation and Socket Scan Check
Bottom Vision Camera (option)	Ball / Pin Counting and Defect Check
Hot Temperature Test (option)	Ambient to 90° Celsius
ESD Control (option)	Bar Type Ionizer / End Effector Ionizer
Power & Air Supply	3 phase 415V +/- 10%, 50 / 60 Hz, 6 bars



Local Agent:



ISO 9001:2008 CERT NO.: 622220