



GSS1200 Semi Auto Sawing Machine



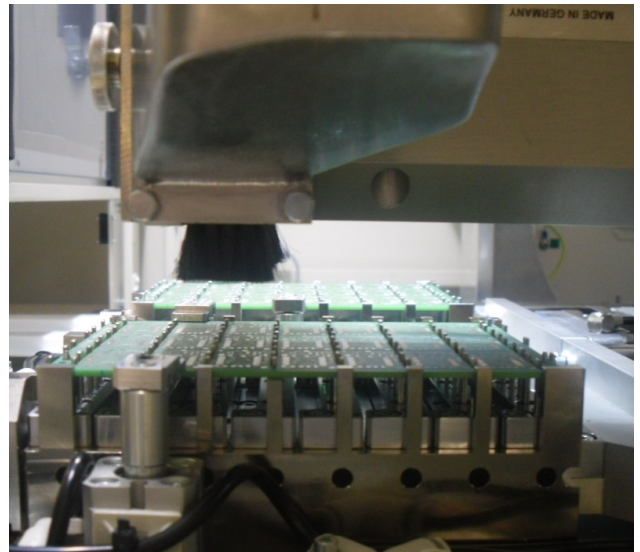
Getech Semi-Automatic Sawing Machine is a stand alone sawing machine specially designed to saw (de-panelize) printed circuit board assemblies (PCBA) into individual assemblies (PCBs).

A rotary axis driven by a direct drive motor for the rotational movement of the spindle head is used in the machine.

Twin workstation coupled with a dedicated gripper fixture will maximize machine output with maximum efficiency.

FEATURES:

- Extremely High sawing speeds up to 200 mm/sec
- Positioning speeds up to 1000 mm/sec
- High precision for 180degree rotation for 0 degree to 360 degrees sawing
- Gripper PCB fixture (optional)
- CE Certification



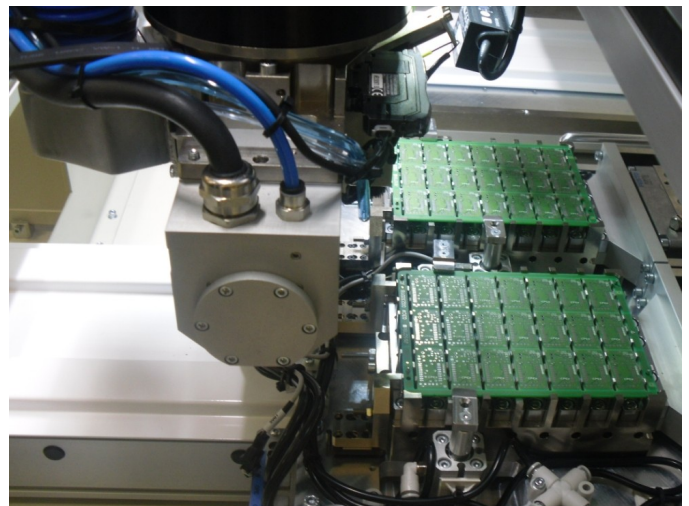
SPECIFICATIONS

Manipulator

Configuration : U, W, X, Y & Z
 Manipulator Motors : 4 axis AC brushless servo motors
 Manipulator Repeatability : ± 0.016 mm

Sawing capability

Non sawing speed : 1000 mm/sec
 Sawing Speed : 200 mm/sec max
 Repeatability : ± 0.1 mm
 Sawing Angle : 0° to 360°





Workstation

Board Positioning : Dual independent workstations
Panel Location : Located by dedicated fixture or gripper fixture
Loading/Unloading : Manual Loading / Unloading
Panel Size : 300 mm x 300 mm
Panel Thickness : 0.5 mm – 2.0 mm (typical)

Spindle Motor

Power : 1.2kW spindle with ESD Ceramic bearings
Max. Speed : 30,000 rpm
Cooling : Ambient cooled
Tool Change : Manual tool change
Saw size : 75mm diameter
Saw thickness : 0.3 to 1.0 mm

Vacuum System

Power : 3.0 kW rotary vane blower
Filtration : 3 stage filtration with disposable industrial vacuum filter bag (10 micron)

Vision system

Video camera : High resolution CCD video camera,

Programming

On-line : Vision assisted point to point manual teaching or manual data input of coordinates
Editing Function : Dry run vision assisted / test run mode, PCB Fiducial alignment
Variables Functions : Tool thickness compensation, filter change interval (distance) setting

Operation Monitor

Saw Blade : Tool life tracking, PCB board count, Tool broken sensor
Vacuum : Vacuum filter change alarm
Machine : Machine error history

Options

- Barcode Support 1D or 2D
- Fiducial Alignment

MACHINE DIMENSIONS & UTILITIES

Machine size : 1.30 M x 1.30M x 1.70M
Weight : 1000kg
Power Supply : (options available)
Air Supply : 6 bars



ISO 9001:2008 CERT NO.: 622220

Local Agent: