

GMS 1000

||||| *High-Speed Inkjet Marking System* |||||



Superior Printing Accuracy
Excellent Software Interface
High Scanning Yield





Mechanical Specifications	
Manipulator Accuracy	+/- 0.015mm
Manipulator Repeatability	+/- 0.01mm
Number of Axis	4
Configuration	x,y,z and u
Speed	1m/s
Working area	300mm x 320mm (Max) 120mm x 120mm (Min)
Foot print	1.2 x 1.2 x 1.8m (3 stage) 1.7 x 1.2 x 1.8m (4 stage)
Utilities	Electrical Air supply
	1 phase 230V (Options available) 6 Bar, 35 L/min

Printing Specifications	
Printing Repeatability	+/- 0.1mm
Resolution	170 dots/inch
Print size	1mm - 5mm
Throw Distance	4.8mm - 9.5mm

Software	Teaching of X - Y co-ordinates Manual Input of printing parameters
----------	-----------------------------------------------------------------------

Scanning Capability Scanning Camera System	Codes : 2D, 1D, OCR CCD camera, LED lighting
-----------------------------------------------	-------------------------------------------------

Options	Flipping module Board Orientation Interfacing with host computer Additional conveyor stage Pigmented ink printing Other printing format
---------	--------------------------------------------------------------------------------------------------------------------------------------------------------

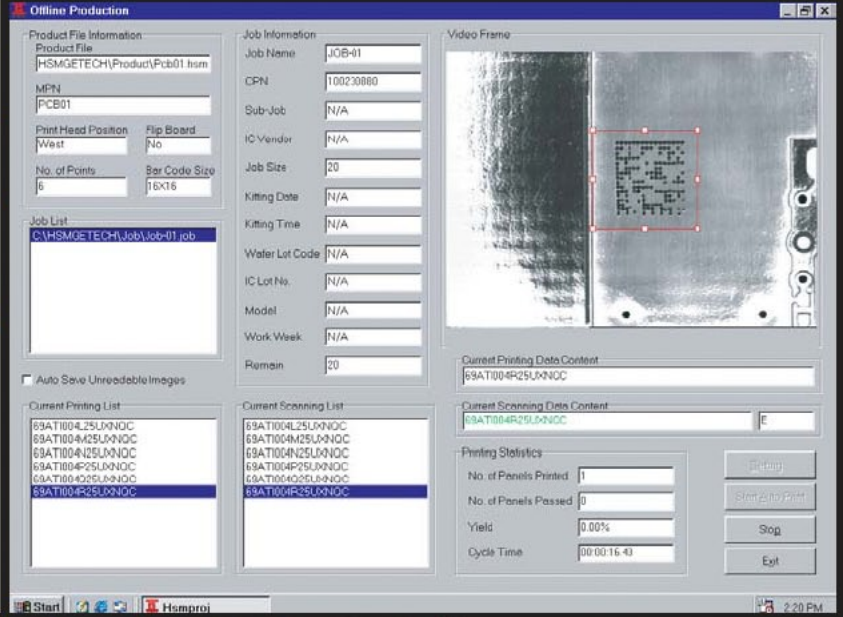
The HSM-1000 is a fully automatic in-line marking system designed to handle PCB, LCD, Flex circuit or any other type of products on carriers. Prints ranging from 2D matrix, 1D bar codes and human readable character printing can be performed and options are available for coloured ink.

Utilising high resolution ink-jet system, high quality printing can be achieved where space is a premium. Accurate positional repeatability of the prints are ensured by the use of high precision manipulator and AC servo motors.

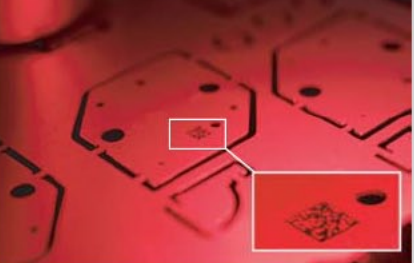
Very small, high clarity prints can be done virtually on any surface and permanent marking can be achieved using the wide range of inks that are available.

The Windows® based Graphical User interface allows for easy programming, automatic conversion of user defined alphanumeric to 2D or 1D codes are available. Optional scanner or camera can be mounted to scan and verify the print, this input can be log into the machine software for the option to connect to factory network.

For multi-boards panel, high throughput can be achieved with the "simultaneous print and scan" machine configuration.



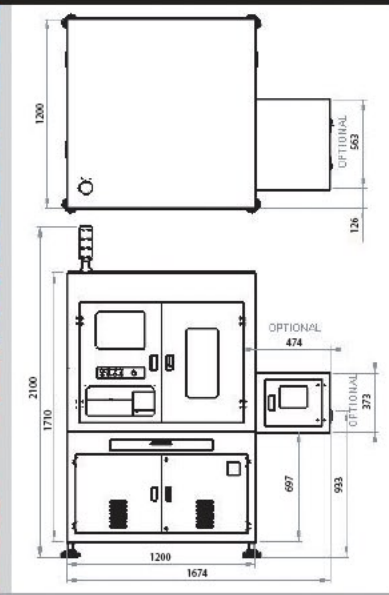
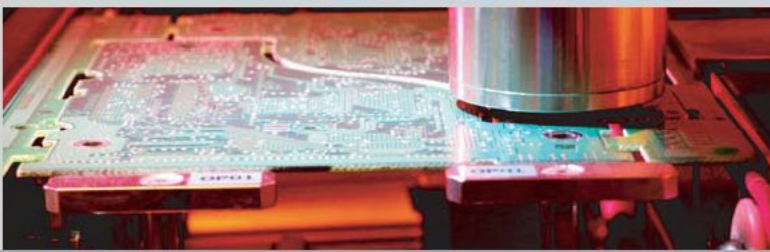
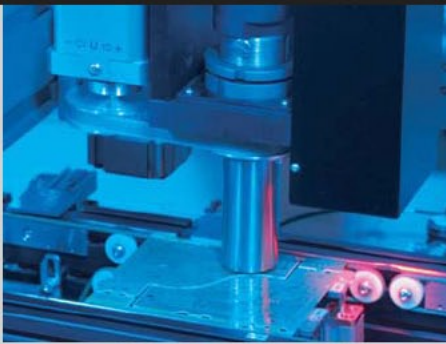
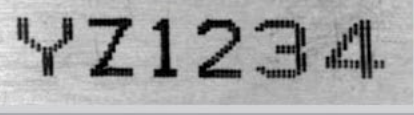
Printing Samples



Printing Barcodes



Printing Alphabets/Numbers



201, Woodlands Ave 9, #05-50, Spectrum 2, Singapore 738955
 Tel: (65) 6756 0777 Fax: (65) 6756 0770
 Email: sales@getecha.com.sg Website: www.getecha.com.sg



Agent's Stamp